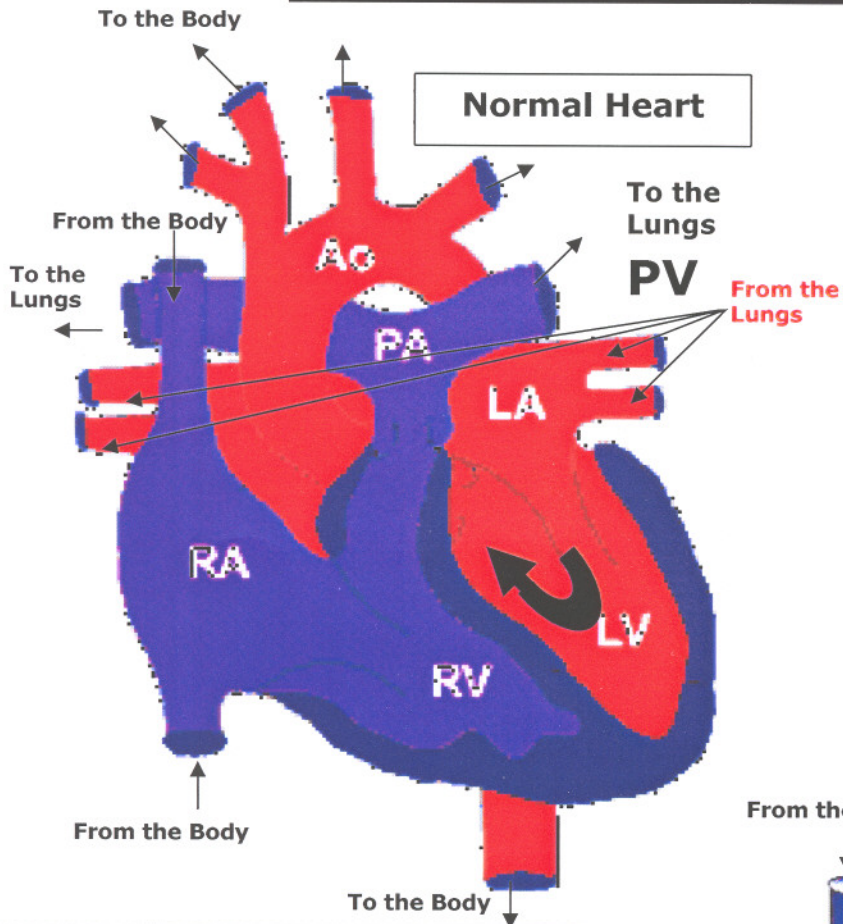
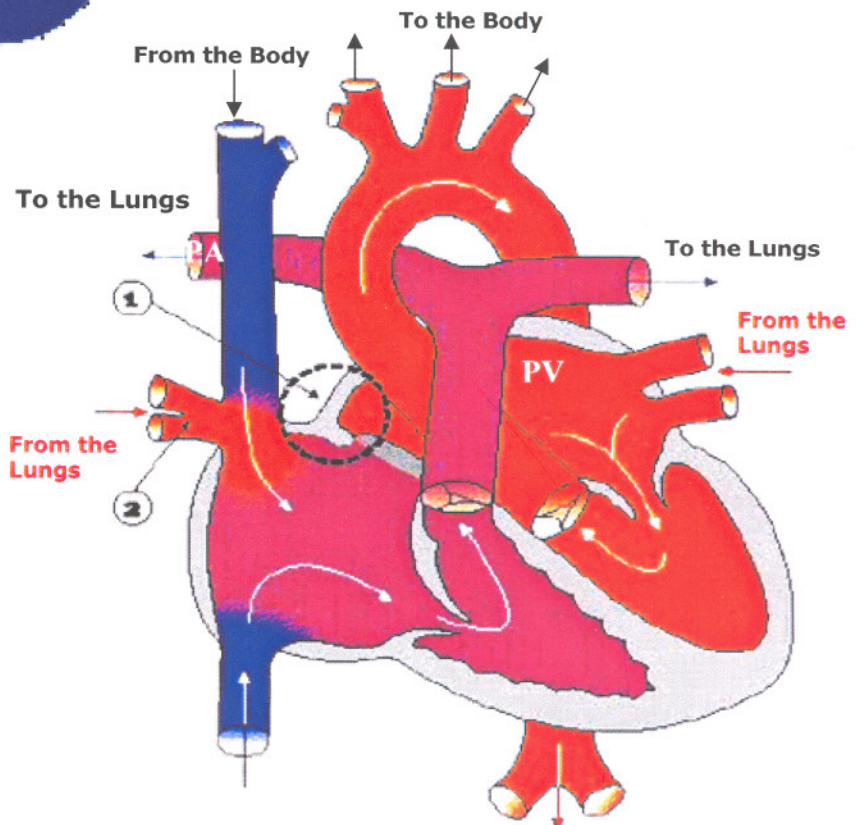


# PARTIAL ANOMALOUS PULMONARY VENOUS RETURN (PAPVR)



The four pulmonary veins return oxygen-rich blood from the lungs to the left atrium. From there, blood flows through the left ventricle to the aorta, where it is pumped to the rest of the body.



<ul style="list-style-type: none"> <li><span style="color: red;">■</span> Oxygen-rich Blood</li> <li><span style="color: blue;">■</span> Oxygen-Poor Blood</li> <li><span style="color: purple;">■</span> Mixed Blood</li> </ul>	<ul style="list-style-type: none"> <li>AO= Aorta</li> <li>PA= Pulmonary Artery</li> <li>PV= Pulmonary Vein</li> <li>LA= Left Atrium</li> <li>RA= Right Atrium</li> <li>LV= Left Ventricle</li> <li>RV= Right Ventricle</li> </ul>
--	---

In **Partial Anomalous Pulmonary Venous Return (PAPVR)**, one or two of the pulmonary veins returns blood to the right atrium instead of the left atrium. This causes oxygen-rich blood to flow back to the lungs instead of on to the rest of the body.